

May 2019

New Frontiers 2018-19 Brochure

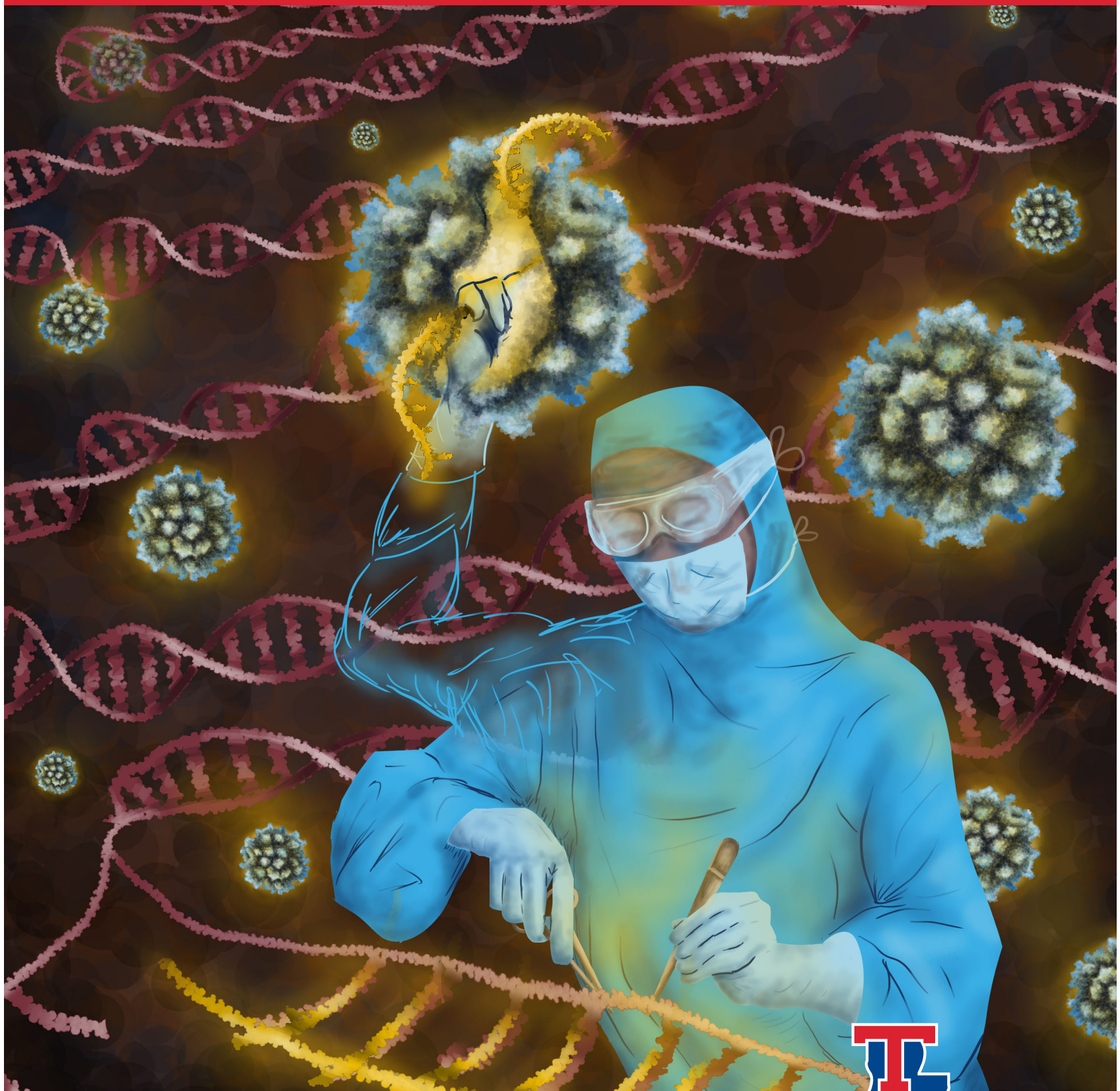
Follow this and additional works at: <https://digitalcommons.latech.edu/new-frontiers-brochures>

Recommended Citation

"New Frontiers 2018-19 Brochure" (2019). *Annual Brochures*. 1.
<https://digitalcommons.latech.edu/new-frontiers-brochures/1>

This Book is brought to you for free and open access by the New Frontiers in Biomedical Research Seminar Series at Louisiana Tech Digital Commons. It has been accepted for inclusion in Annual Brochures by an authorized administrator of Louisiana Tech Digital Commons. For more information, please contact digitalcommons@latech.edu.

New **Frontiers** 2018-19
in Biomedical Research



LOUISIANA TECH UNIVERSITY



New Frontiers in Biomedical Research

*All seminars will be held at Louisiana Tech University in University Hall beginning at 3:30 p.m.
Light refreshments will be served.*

Every day, new discoveries in the areas of biology, biomedical engineering, physics, and chemistry expand our understanding of human health and disease. As a University, we are part of that growing body of knowledge. Through interdisciplinary collaborations and interactions with leaders in these fields, we will continue to increase our own impact on science.

Established in 2013, the New Frontiers in Biomedical Research Seminar Series is a year-long research lecture series at Louisiana Tech University bringing world-renowned researchers from a variety of biomedical fields to campus where students and faculty have the opportunity to learn and interact with leaders in their fields of study. This year the series continues to grow and represent the interdisciplinary nature of biomedical research with seminars on diet and physiology, neuroscience, biomechanics, computational modeling, and medical visualization and communication. This series represents the interests and efforts of four Colleges across campus who share a passion for research that seeks to understand and improve human health and medicine. We are looking forward to another exciting year of learning about new areas of research and sharing the University's own research programs with our guests.

Please join us in welcoming and learning from nationally recognized researchers and scientific communicators in our annual seminar series. You will learn about cutting-edge research that is changing the way we address problems in biological research and human health, the tools we use to study them, and the methods used to educate and inform patients.



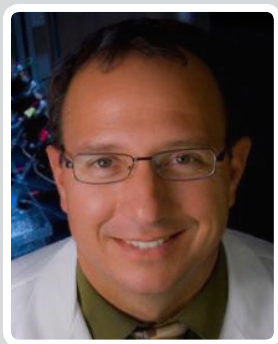
Monday, September 24, 2018

The Sensing and Signaling Systems Linking Dietary Macronutrients to Tissue-Specific Adaptive Responses: The Leverage of Protein

Dr. Thomas Gettys

John Henry Hernandez Professor of Health Promotion
Principal Investigator, Pennington Center of Biomedical Research
Professor of Nutrient Sensing and Adipocyte Signaling
Pennington Biomedical Research Center

Lecture Sponsors: *College of Applied and Natural Sciences and Biological Sciences*



Monday, February 11, 2019

Reelin' in Memories: Reversing Cognitive Defects from Normal Aging and Disease States

Dr. Edwin J. Weeber, Ph.D.

Professor, Molecular Pharmacology and Physiology
Chief Scientific Officer, Byrd Alzheimer's Institute
Director, Neurobiology of Learning Laboratory
University of South Florida

Lecture Sponsor: *Center for Biomedical Engineering and Rehabilitation Science*

Impacts on Health and Society



Monday, March 25, 2019

Picture as Portal: Using Visual Language to Advance Science and Technology

Betsy Palay, MS, Certified Medical Illustrator

Co-Founder of S.P.A.R.K. | 5 strategies for the visual communication of science
Past President, Association of Medical Illustrators

Lecture Sponsors: *Louisiana Tech University & VISTA*



Monday, April 8, 2019

Anabolic Endocrine Mechanisms with Target Tissues and Exercise

Dr. William Kraemer

The Ohio State University
Head, Neuroscience/Neuromuscular Human Research Laboratory
Professor, Department of Human Sciences
Senior Scientific Advisor
Stanley D. and Joan H. Ross Center for Brain Health and Performance

Lecture Sponsor: *Department of Kinesiology*



Monday, April 29, 2019

What the Senses, Rhetoric, and Literacy Can Teach Us about Communicating in Emergency Situations

Dr. Elizabeth Angeli

Assistant Professor, English
2019 Eunice C. Williamson Fellow in Health and Medical Communication
Marquette University

Lecture Sponsor: *Eunice C. Williamson Endowment Fund and Center for Health and Medical Communication at Louisiana Tech University*



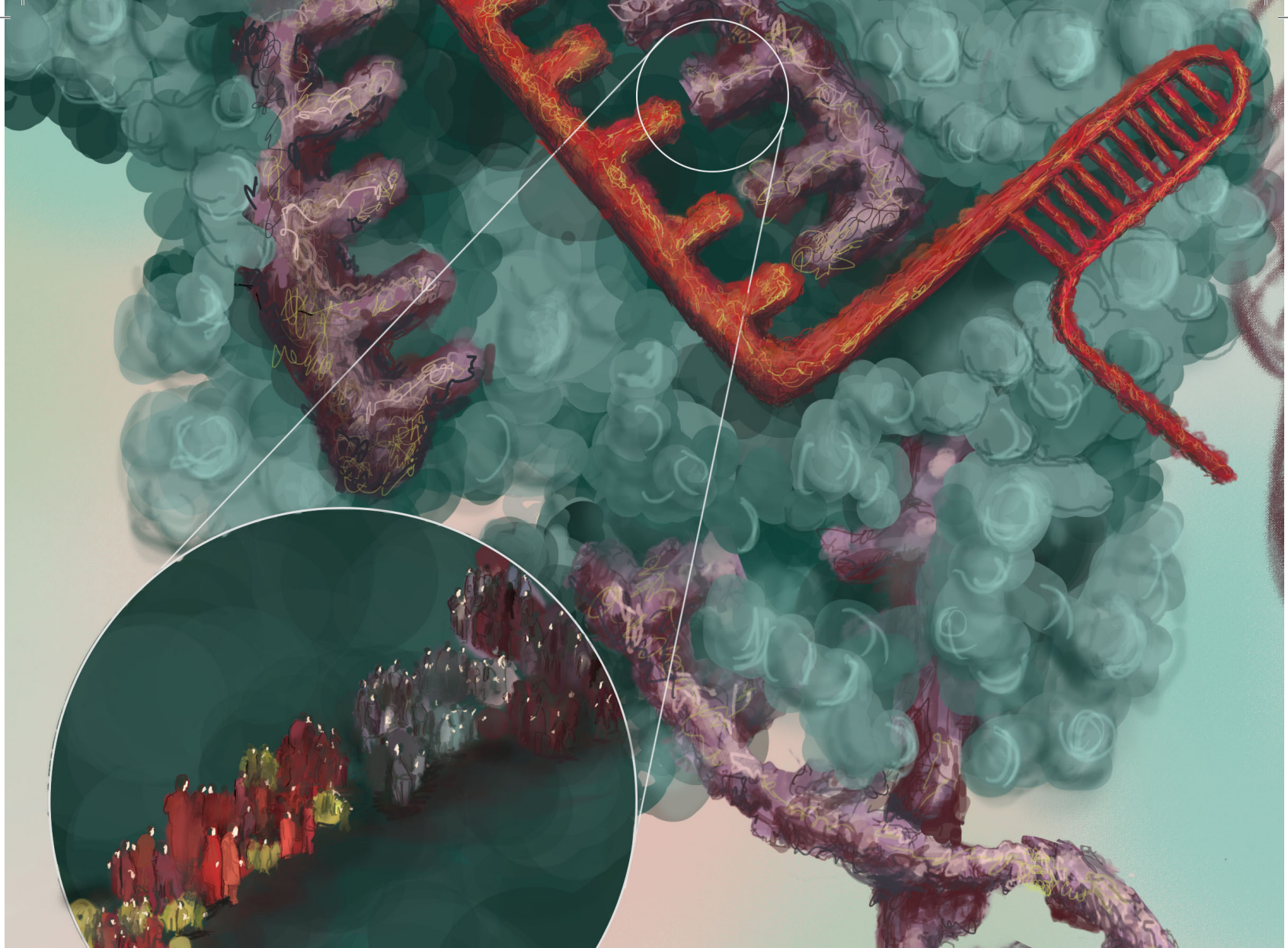
Monday, May 6, 2019

Computational Modeling of Proteins and Molecular Interactions: Beyond Simulation

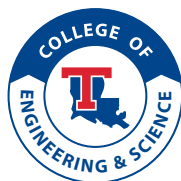
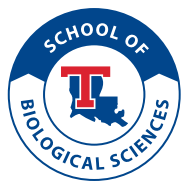
Dr. Lydia Kavradi

Noah Harding Professor of Computer Science and Professor of Bioengineering
Rice University

Lecture Sponsor: *College of Engineering and Science*



Sponsors



Special thanks to members of the Tech and Ruston communities for their generous donations.

For additional information about this lecture series contact,
Dr. Jamie Newman (jjnewman@latech.edu) or Dr. Mary Calderera Moore (mcmoore@latech.edu)
or go to <http://biomedicalresearch.wixsite.com/new-frontiers>

Front Cover Art, Cinthia Rincon Back Cover Art, Anna Morris